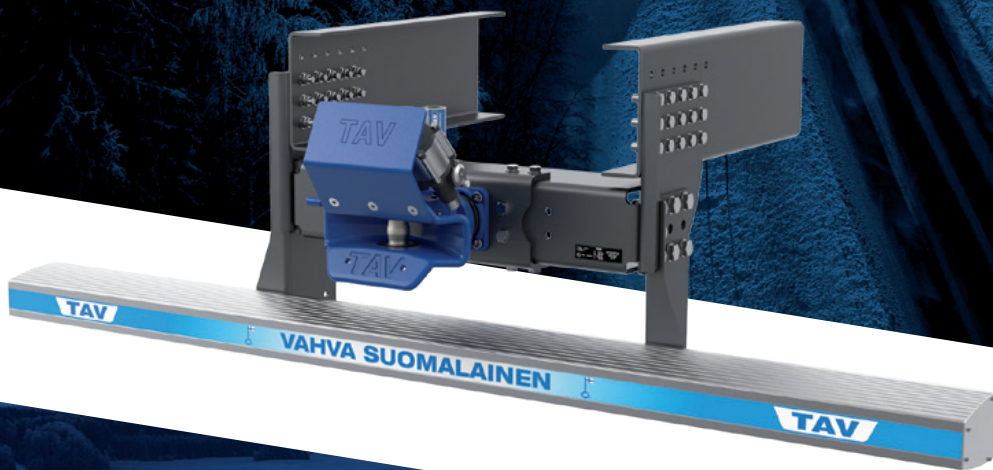




TAV



**REACHING
YOUR DESTINATION
WITH SECURITY**

HEAVY COUPLING HEADS FOR VEHICLE COMBINATIONS

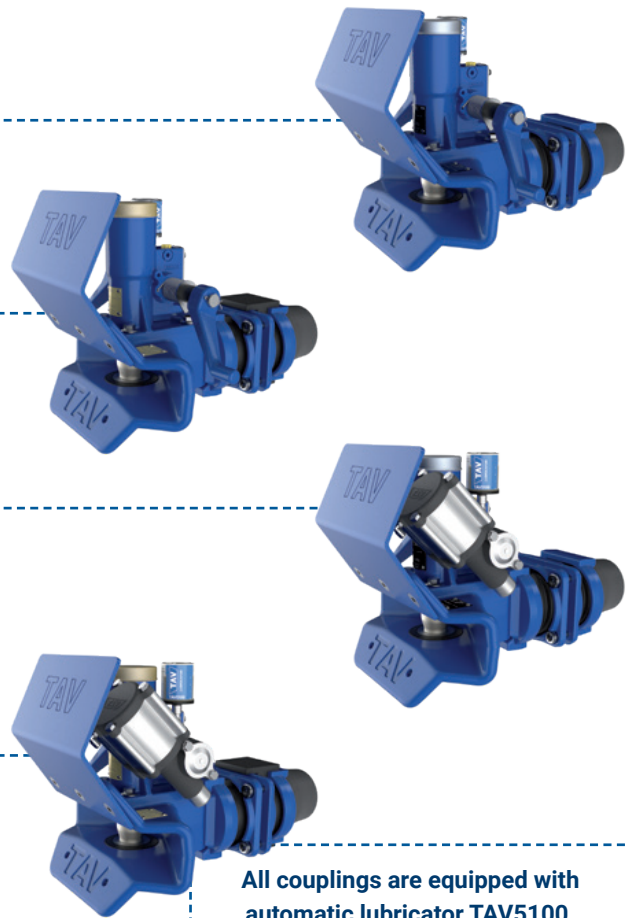
TAV50-v2 coupling is intended for trailers with articulated drawbar fitted with 50 mm drawbar eyes.

TAV50D-v2 coupling is intended for dolly trailers fitted with 50 mm drawbar eyes and trailers with articulated drawbar.

TAV50SR-v2 coupling is intended for trailers with articulated drawbar. Coupling is equipped with pneumatic servo actuator.

TAV50DSR-v2 coupling is intended for connecting a dolly to vehicle. It is also suitable for connecting trailers with articulated drawbar. Equipped with pneumatic servo actuator.

TAV50SR-v2 ja TAV50DSR-v2 couplings are equipped with easy to use operating valve TAV5901. The servo cylinder can be installed either on the left or the right side. Standard installation is on the right.



All couplings are equipped with automatic lubricator TAV5100.

DRAWBEAMS



TAV200 drawbeam is suitable for trailers and lighter dolly combinations, but is ready for combined weights of 80 tons. The drawbeam is available in dimensions 550-900 mm.

D-value: 200 Kn	Dc-value: 120 kN	S-value: 1000 kg	V-value: 50 kN	Class: F
-----------------	------------------	------------------	----------------	----------

TAV220 drawbeam is suitable for the dollies and heavy centre-axle trailers and fill all of those requirements. Robust made drawbeam designed for heavier vehicle combinations (High Capacity Transport, HCT). The drawbeam is available in dimensions 700-900 mm.

D-value: 220 kN	Dc-value: 160 kN	S-value: 1000 kg	V-value: 50 kN
-----------------	------------------	------------------	----------------

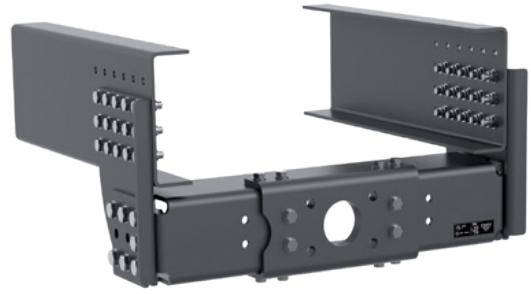
Hole pattern:

ISO3584:2020 (160x100 mm)

EU class of the device: F | UNECE R55 approved

MODEL SPECIFIC SIDE PLATES

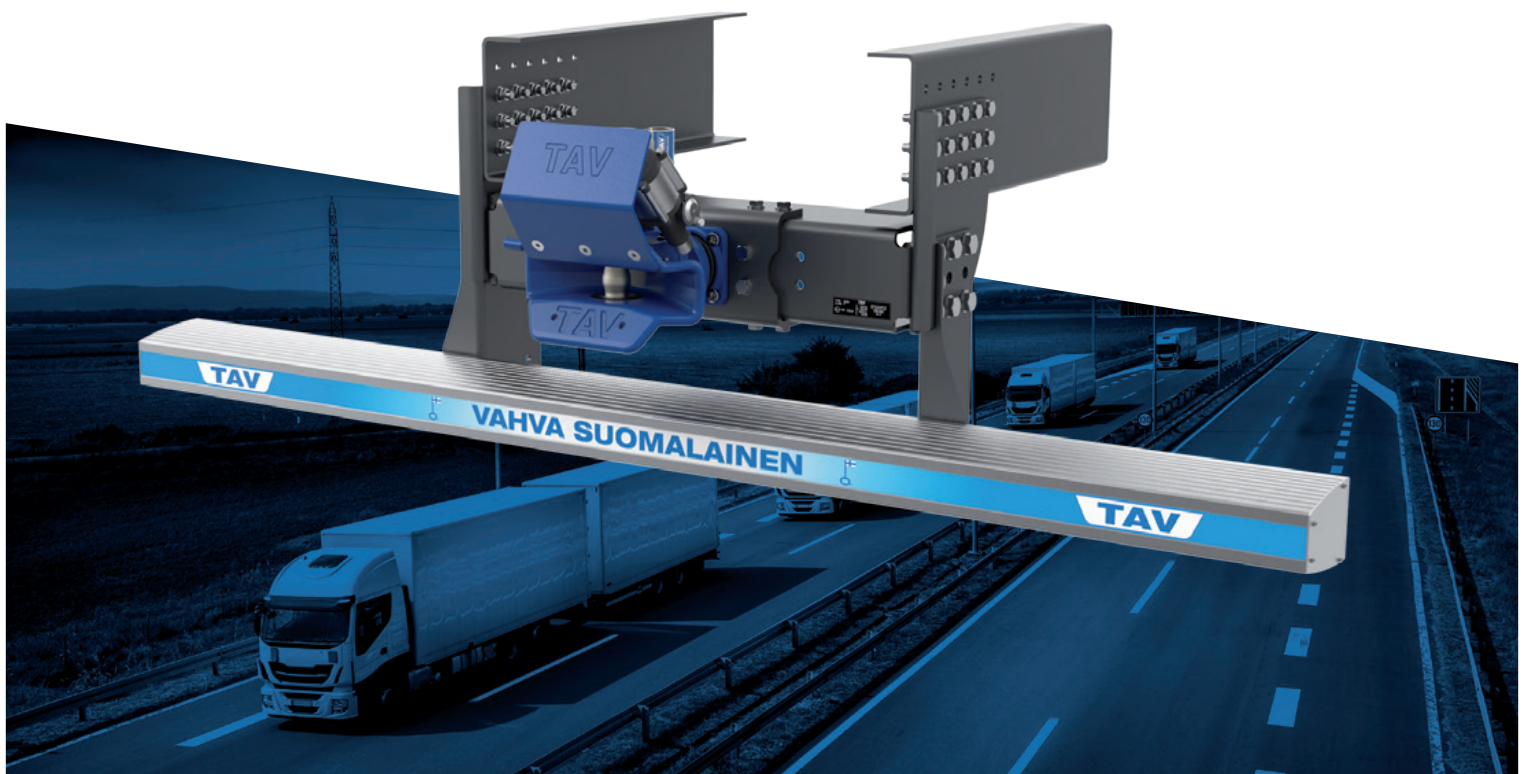
The coupling head is installed with model specific **TAV206 series side plates** below the lower surface of the vehicle's frame.



MODEL	FRAME WIDTH mm	DRAWBEAM	DRAWBEAM HCT	SIDE PLATES
Mercedes	760	TAV200-760	TAV220-760	TAV206MB
Mercedes	850	TAV200-850	TAV220-850	TAV206MB
Scania	770	TAV200-770	TAV220-770	TAV206SC
Volvo	850	TAV200-850	TAV220-850	TAV206VO
Renault	850	TAV200-850	TAV220-850	TAV206RE
MAN	760	TAV200-760	TAV220-760	TAV206MAN
DAF	790	TAV200-790	TAV220-790	TAV206DAF
Iveco	770	TAV200-770	TAV220-770	TAV206IV
SISU	800	TAV200-800	TAV220-800	TAV206

REAR UNDERRUN PROTECTION TAV750

The type approvals (UNECE R55) of the new drawbeams and side plates allow the installations and use of the TAV750 rear underrun protection which meets the latest regulations (UNECE R58 rev 3).



TAV

CONTACT INFORMATION

M. KORTE OY

Menotie 2, FI-33470 Ylöjärvi

Phone +358 3 371 2347
sales@tav.fi
tav.fi



FINNISH QUALITY WORK

The roots of the modern TAV product family extend back to the 1970s. The cornerstones of our manufacturing have always been safety, user-friendliness and reliability under all possible climate conditions around the world.

Our products are made with high-quality raw materials in co-operation with the best actors in the field. Our E-approved product family includes drawbeams and their side plates for the frame models of all vehicle manufacturers, coupling heads for drawing trailers and dollies as well as the remote display equipment indicating the safe locking of the coupling equipment.